

**CENTURION
SUPREME**

R
ROSWELL.
MARINE

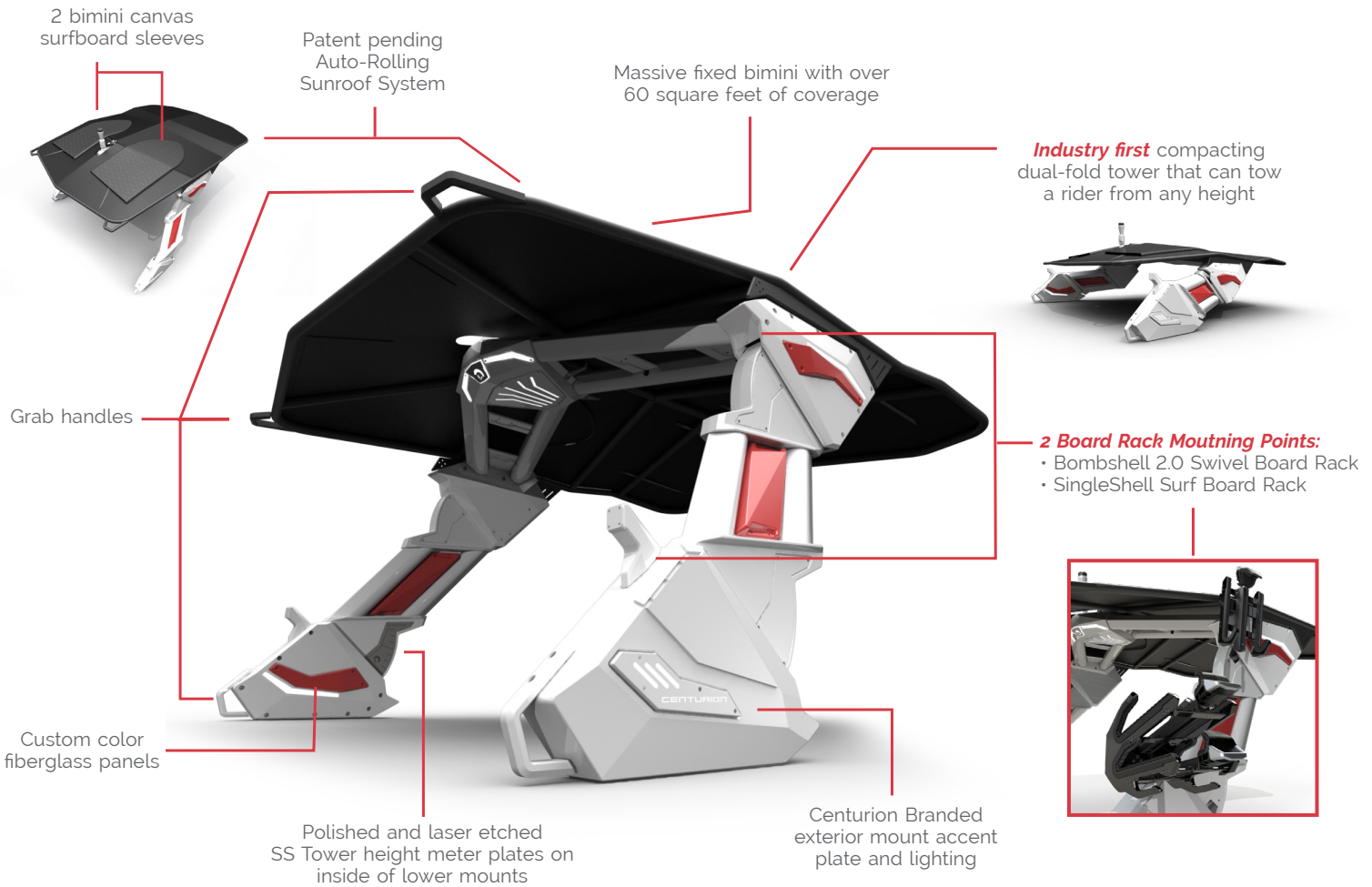


'24 Product Guide

CENTURION

PREDATOR POWER TOWER & BIMINI

The **Centurion Predator Power Tower** enters a new dimension of design, introducing Roswell's Compacting Dual-Fold Technology. Raise and lower your tower to any height while maintaining full functionality with the ability to tow a rider in any position. The integrated Bimini remains parallel to the boat floor throughout the entire range of operation for configurable coverage highlighted by the innovative new Roswell auto-rolling fabric system.



TOWER FEATURES

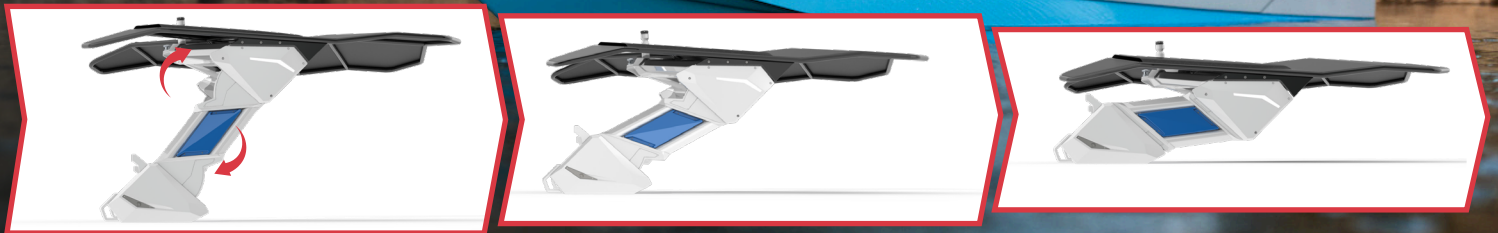
- 4 speaker mounting plates
- Integrated accent lighting
- Centurion water drop tubing
- Folding Anchor light
- Roswell Marine six-stage **Chem-Film immersion treatment** process passivates aluminum parts for advanced corrosion protection and paint adhesion

CENTURION

PREDATOR TOWER & BIMINI

COMPACTING DUAL-FOLD TECHNOLOGY

A geometric masterpiece in design, two points of articulation maintain level bimini coverage throughout the full range of motion with the strength to tow a rider in all positions.



ROSWELL MARINE AUTO-ROLLING FABRIC SYSTEM

Developed to deliver hassle-free customizable coverage, this system provides a simple solution for deploying and retracting bimini canvas and more. A linear-tensioning band is integrated into the fabric providing additional stiffness when deployed, and neatly retracts the covering as zippers or fasteners are released by rolling back into a compact storage position.



CENTURION

DROPZONE AUTO TOWER & BIMINI
CENTURION BOATS EXCLUSIVE

Designed exclusively for Centurion Boats, the award-winning **DropZone Auto Tower by Roswell Marine** delivers an innovative solution to folding function with the ability to step forward in style, strength, and safety with no limitations. This innovative approach escapes traditional actuator placement, integrating our patented floating-linear-actuator design into the top of the tower with one fixed mounting point for smooth operation and less wear on each component. The addition of integrated courtesy lighting, surf-side tow points, and rope hangers pulls together a package that discovers new possibilities in tower design.



CENTURION

DROPZONE AUTO TOWER & BIMINI
CENTURION BOATS EXCLUSIVE

DROPZONE AUTO TOWER

- Powered by Roswell's Patent-Pending Floating Point Tower Technology
 - Color Matched Custom Fiberglass Accent Plates
 - CoverFire 2.0 Marine Surround Sound Audio System
 - Patented Bombshell Board Racks
-

- Unique Waterdrop Extruded Construction Provides Incredible Strength & Timeless Style
- Custom Lighted Side Accent Panels with Centurion Logo
- Three Tow Heads (Port, Center, Starboard)
- Patented Cam Latch and Weight Assist for Easy Folding and to Prevent Tower Vibration
- Integrated Grab Handles, Rope Hangers, Courtesy Lights & LED Accents
- USCG Approved Anchor Light with Integrated Tow Point

DROPZONE BIMINI

- Large - Approx. 36.4 Sq. Ft.
 - XXL - Approx. 51.4 Sq. Ft.
 - Bi-Fold Design Enhances Function and Style
 - Two Integrated Surf Pockets for Extra Board Storage
-



CENTURION

BATTLE ADVANCE TOWER & BIMINI

BATTLE ADVANCE TOWER

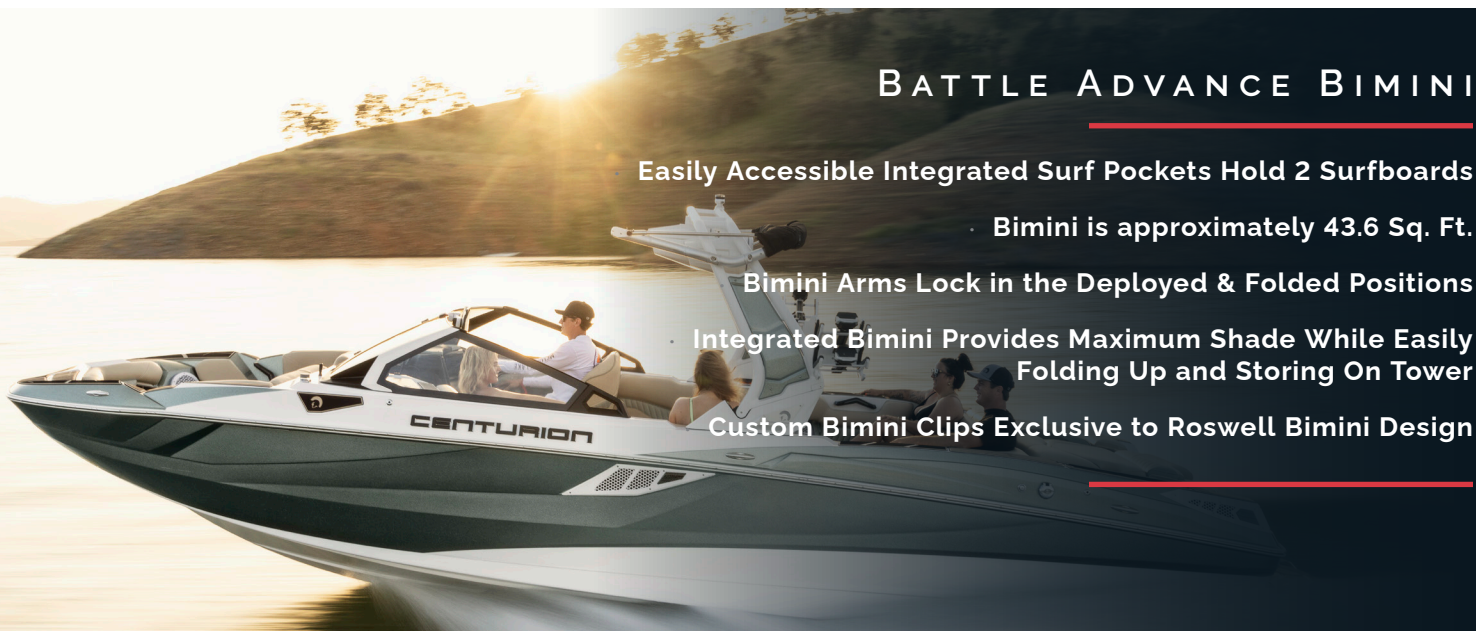
- **Board Rack Options:** Swivel or Patented Bombshell
 - Patented Cam Latch and Weight Assist for Easy Folding & to Prevent Tower Vibration
 - Forward-Folding Design Allows for Easier Rear Entry When Folded
 - USCG Approved Anchor Light with Integrated Tow Point
 - Color-Match Accent Panels
 - Integrated LED Accent Lighting
 - Integrated Board Rack & Bimini Mounts
-



The **Battle Advance Tower by Roswell Marine** brings your boating experience to a place that makes Top Gun pilots say “great balls of fire.” This forward-folding design utilizes our patented weight-assist system for simple single-person operation that makes configuring your tower for any situation an afterthought. Featuring the patented Roswell Cam-Latch, the Battle Advance Tower keeps you locked & loaded with unmatched rigidity, strength, and style.

BATTLE ADVANCE BIMINI

- Easily Accessible Integrated Surf Pockets Hold 2 Surfboards
 - Bimini is approximately 43.6 Sq. Ft.
 - Bimini Arms Lock in the Deployed & Folded Positions
 - Integrated Bimini Provides Maximum Shade While Easily Folding Up and Storing On Tower
 - Custom Bimini Clips Exclusive to Roswell Bimini Design
-



SUPREME

F-SERIES TOWER & BIMINI

F-SERIES TOWER

- **Board Rack Options:** Swivel or Patented Bombshell
- Patented Cam Latch and Weight Assist for Easy Folding & to Prevent Tower Vibration
- Forward-Folding Design Allows for Easier Rear Entry When Folded
- USCG Approved Anchor Light with Integrated Tow Point
- Integrated LED Accent Lighting
- Integrated Board Rack & Bimini Mounts



Adding another element of evolution to the The Supreme Boats line, the **F-Series Tower and Bimini by Roswell Marine** delivers world-class quality and features in style. Utilizing our patented weight assist and cam latch technologies, the F-Series forward folding design makes lowering and raising your tower easy.

F-SERIES BIMINI

- Easily Accessible Integrated Surf Pockets Hold 2 Surfboards
- Bimini is approximately 43.6 Sq. Ft.
- Bimini Arms Lock in the Deployed & Folded Positions
- Integrated Bimini Provides Maximum Shade While Easily Folding Up and Storing On Tower
- Custom Bimini Clips Exclusive to Roswell Bimini Design



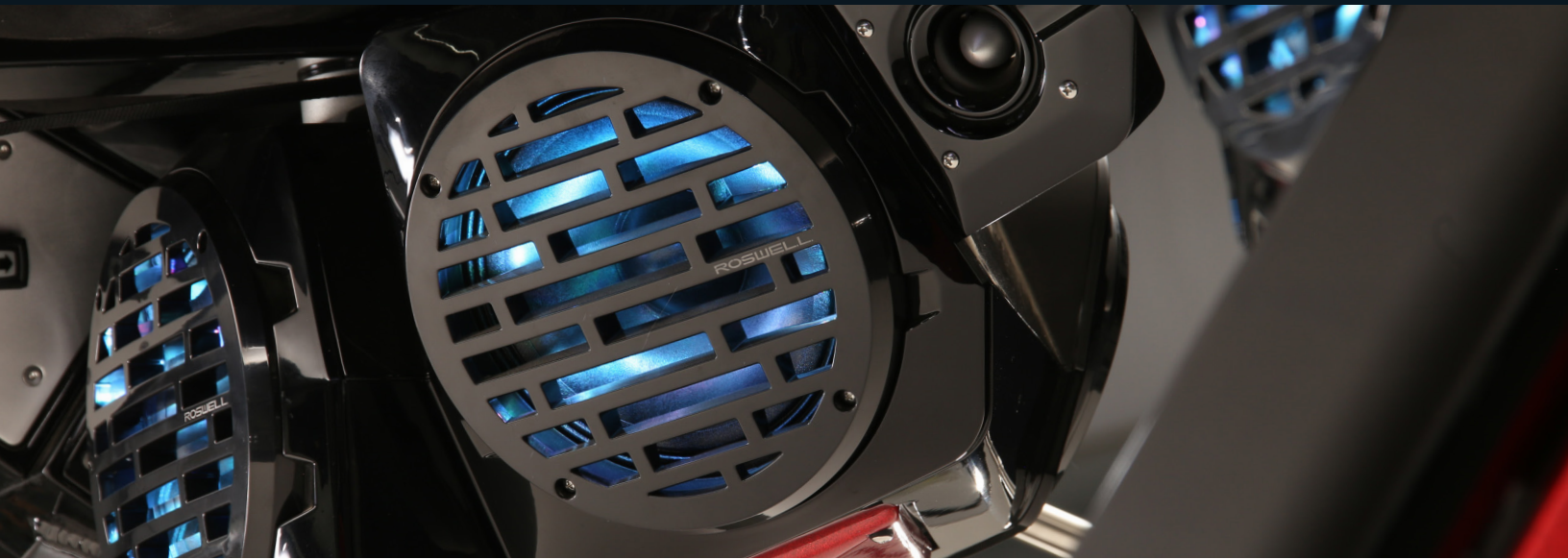
CENTURION

COVERFIRE 2.0 MARINE SURROUND SOUND AUDIO SYSTEM



CENTURION

COVERFIRE 2.0 MARINE SURROUND SOUND AUDIO SYSTEM



- **CoverFire Tower Speakers:** Available only on Dropzone Auto Tower
- Coverfire Tower Speakers feature the Award-Winning Roswell R1 Pro 8" speakers paired with 1" HLCD Titanium Tweeters bringing you a perfect balance of clarity and incredible power
- The Coverfire 2.0 housing was specifically designed to deliver the best audio experience both on the water and inside the boat. One pair of R1 Pro speakers fire back toward the rider and an additional pair fire inside the cockpit of the boat. On the front side of the housing you'll find a pair of 6.5" Roswell R1 speakers angled toward the bow of the boat
- Inside of the boat you are surrounded by up to 8 Roswell R1 8" speakers along with an R1 12" Subwoofer
- CoverFire 2.0 features integrated RGB LED speaker lighting

Total System Output Fi21, Fi23, Fi25

1,910 Watts RMS | 3,820 Watts Peak

Total System Output Ri230, Ri245, Ri265

2,110 Watts RMS | 4,220 Watts Peak

- **Coverfire Tower Speaker System Power:** 810 Watts RMS | 1620 Watts Peak
 - **R1 8" In-Boats:** 100 Watts RMS | 200 Watts Peak
 - **R1 12" Sub:** 500 Watts RMS | 1,000 Watts Peak



CENTURION | SUPREME

STACKABLE R1 MARINE AMPLIFIERS



Lit logo power indicator lets you know your amp is receiving power

Marine-grade durability

Stackable Class-D design



CENTURION | SUPREME

STACKABLE R1 MARINE AMPLIFIERS

R1 650.4

- Ch 1-4 calibrated crossover: **(FULL/HPF/LPF)**
- Bridgeable 4-channel design
- 2 Ohm Stable at 165 watts per channel
- Switchable differential RCA inputs minimize interference and induced noise
- Conformal-coated PCBs



| | | | |
|-------------------|----------------------|---------------------|-----------------------|
| Continuous Power: | 100W x 4 @ 4Ω | Input Sensitivity: | 0.2-10.0V |
| | 165W x 4 @ 2Ω | HPF/LPF: | 30-300Hz |
| Bridged Power: | 300W x 2 @ 4Ω | Frequency Response: | 10Hz - 25kHz |
| | | Bass EQ: | 0-18 dB @ 45Hz |

R1 550.2

- Built-in crossovers: **(FULL/LPF/HPF) + Subsonic**
- Bridgeable 2-channel design
- 2 Ohm Stable at 275 watts per channel
- Switchable differential RCA inputs minimize interference and induced noise
- Phase Control
- Conformal-coated PCBs



| | | | |
|-------------------|----------------------|---------------------|-----------------------|
| Continuous Power: | 165W x 2 @ 4Ω | Input Sensitivity: | 0.2-10.0V |
| | 275W x 2 @ 2Ω | HPF/LPF: | 30-300Hz |
| Bridged Power: | 550W x 1 @ 4Ω | Frequency Response: | 10Hz - 25kHz |
| | | Bass EQ: | 0-18 dB @ 45Hz |

R1 1000.1

- Low-pass and subsonic filters **(12 dB/oct.)**
- Bass boost control **(0-18dB @ 45Hz)**
- Full 0-180° phase control
- Switchable differential RCA inputs minimize interference and induced noise
- Conformal-coated PCBs



| | | | |
|-------------------|--------------------|---------------------|-----------------------|
| Continuous Power: | 400W @ 4Ω | Input Sensitivity: | 0.2-10.0V |
| | 675W @ 2Ω | LPF: | 30-300Hz |
| | 1,000W @ 1Ω | Frequency Response: | 10Hz - 400Hz |
| | | Bass EQ: | 0-18 dB @ 45Hz |

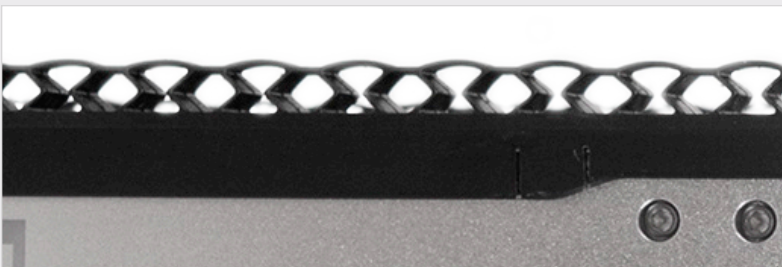
CENTURION | SUPREME

BOMBSHELL 2.0 BOARD RACKS



The next evolution of the world's most innovative board rack has arrived with the **Roswell Bombshell 2.0**. Designed exclusively for Centurion and Supreme boats utilizing Roswell's all-new R-FLEX suspension technology, new features at every angle deliver the most advanced board storage solution on the water.

R - FLEX SUSPENSION TECHNOLOGY



Roswell R-Flex Suspension Technology has been integrated into the Bombshell 2.0 to deliver an innovative approach to molded board protection that keeps your weapon of choice on cloud 9. Two layers of dampening and deformation contour to any board to hold it snug and suspended from impact.



CENTURION | SUPREME

BOMBSHELL 2.0 BOARD RACKS

Telescoping grab arms maintain positive engagement to secure boards with updated catchhead design creating two points of contact along with stylish anodized aluminum handles that deliver improved ergonomics and rope management.

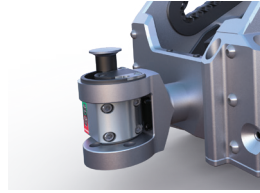
Fits wakesurfers & wakeboards up to 23" wide and 2.5" thick

Roswell R-FLEX Suspension Technology featuring two layers of molded board protection.

All Stainless Steel hardware

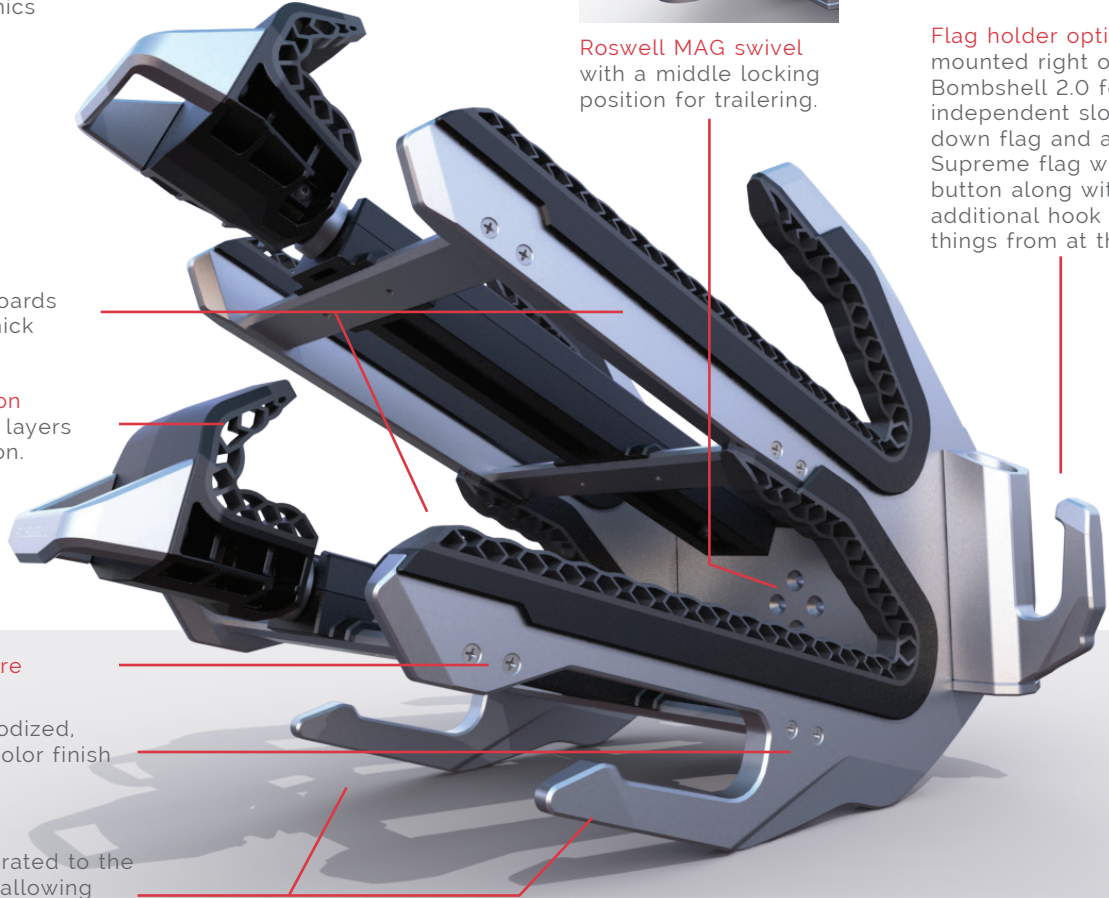
Styling with Sandblast Anodized, Gloss Black and custom color finish options.

Universal hangers incorporated to the bottom side of each rack allowing you to hang wet gear.



Roswell MAG swivel with a middle locking position for trailering.

Flag holder option can be mounted right onto the Bombshell 2.0 featuring two independent slots for a man down flag and a Centurion/Supreme flag with locking button along with an additional hook to hang things from at the dock.



| | |
|-----------------------------|-------------------------------|
| Max Board Thickness: | 2.5 in 6.35 cm |
| Min Board Width: | 14.0 in 35.56 cm |
| Max Board Width: | 23.0 in 58.42 cm |
| Materials: | 6061 aluminum Hard duro TPE |
| Mounting Hardware: | 316 Stainless Steel |

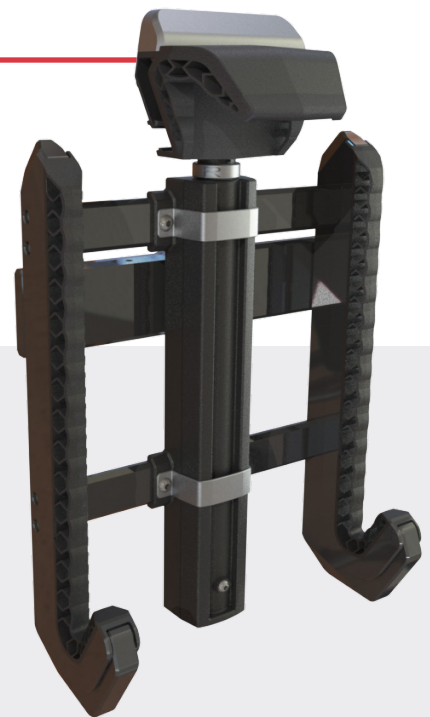
CENTURION | SUPREME

SINGLE SHELL SURF RACK



Exclusive to the Centurion Predator Power Tower, **SingleShell Surf Racks** stack your day on the water with options. R-Flex Suspension Technology and telescoping arms provide premium protection in a low profile position with quick draw function.

- Telescoping Arms Securely Hold Board in Place
- Adjustable For Boards 14" to 23" Wide
- 2.75" Maximum Thickness
- Complete Board Protection Utilizing GatorStep



Tine Spread: 10.0 in | 25.4 cm

Surf Tine Gap: 2.75 in | 6.99 cm

Materials: 6061 Billet Aluminum | Overmolded TPU

Mounting Hardware: 316 Stainless Steel

CENTURION | SUPREME

BOMBSHELL BOARD RACKS



Available with all 2024 Centurion and Supreme towers, **Roswell Marine's Patented Bombshell Racks** offer maximum protection for your payload with looks that knock em' dead every time. Adjustable Telescoping Arms eliminate board chatter in hostile waters keeping you locked and loaded for every session. Taking protection to the next level, Bombshell Board Racks encase your weapon of choice in GatorStep to eliminate casualties.

- Telescoping Arms Securely Hold Boards in Place
- Adjustable For Boards 14" to 23" Wide
- 2.75" Maximum Thickness
- Complete Board Protection Utilizing GatorStep
- Direct Mount with Mag Swivel
- Angled Outward to Maximize Visibility

Tine Spread: 10.0 in | 25.4 cm

Wake Tine Gap: 1.15 in | 2.92 cm

Surf Tine Gap: 2.75 in | 6.99 cm

Materials: 6061 Billet Aluminum | Overmolded TPU

Mounting Hardware: 316 Stainless Steel

CENTURION | SUPREME

SWIVEL BOARD RACKS



Tine Spread: 10.0 in | 25.4 cm

Wake Tine Gap: 1.15 in | 2.92 cm

Surf Tine Gap: 2.75 in | 6.99 cm

Materials: 6061 aluminum | Overmolded TPU

Mounting Hardware: 316 Stainless Steel

CENTURION | SUPREME

SWIVEL BOARD RACKS



All swivel and fixed board racks are overmolded for protection to stay saltwater and board friendly, Each rack features a brushed anodized backing plate and integrated webbed bungee strap with loop.

SWIVEL

- Swivel Attachment Allows You to Rotate Racks Inward 180 Degrees for Safe Storage and Docking
- Soft TPU Board Protection
- Durable Sandblasted / Anodized Components
- Accommodate 1 Surfboard and 1 Wakeboard



CENTURION

360 MIRROR

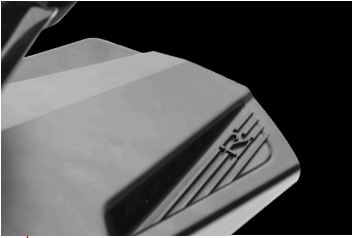
The **Centurion 360 Mirror** delivers a new level of adjustability to give you the perfect viewing angle in any application. Dual 360 degree rotation points allow you to reposition your mirror effortlessly on the fly. Enjoy a clear line of sight both ahead and behind you from a single mounting location with 144 degrees of panoramic reflection. Quickly move the mirror away from the walkthrough and under the windshield for storage with convenient tool-less adjustment that makes it the most user-friendly mirror on the market.



CENTURION

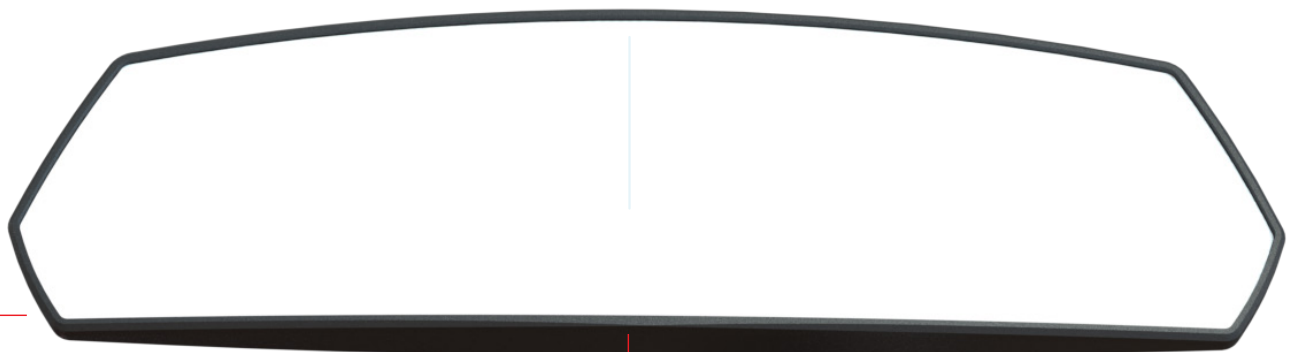
360 MIRROR

Molded Hand Grips



High Definition Shatterproof Mirror
with 144° Viewing Angle

**DUAL 360°
ROTATION POINTS**



Tactile Feedback When
Positioning



Overmolded Soft-Touch
Mirror Knob

R-Flex Inserts help to
provide protection
and extra grip to the
windshield

SPECIFICATIONS

- High Definition Shatterproof Mirror
- 144 Viewing angle
- 360 Variable Positioning
- Symmetrical mirror design
- R-Flex inserts designed for Centurion windshields
- Premium mirror cover included

DIMENSIONS

| | |
|---|------------------|
| Total height: | 5.9 in 16 cm |
| Total width: | 21.6 in 55 cm |
| Overall height adjustment: <i>(Above windshield header)</i> | 6.5 in 16.5 cm |
| Overall height adjustment: <i>(Below windshield header)</i> | 6.5 in 16.5 cm |

CENTURION

FI GRAB HANDLE



CENTURION

RI LOGO PLATE



CENTURION

RAMFILL & MOTOR VENT



CENTURION

CUSTOM PAINT

Our paint department utilizes the industry's latest coatings and processes to ensure your Roswell product's perfect finish is ready to withstand the harshest marine environments.

Roswell's experienced paint team specializes in industry-leading application standards utilizing marine-grade PPG® vibrance collection paint on the new Predator tower.

Our RapidMatch X-5 spectrophotometer and computer-controlled paint mixing system, offers precise color-matching and a flawless finish.









The content in this catalog is current as from the publication date and supersedes all previous content for Roswell products. Every effort has been made to ensure the information in it is correct at the time of going to press., however, due to a policy of continuous development, Roswell Marine reserves the right to modify any content or technical data without notice. Roswell and the Roswell logos are trademarks of Roswell U.S. LLC d/b/a Roswell Marine. All other trademarks and trade names are the property of their respective holders. No part of this catalog or the Roswell trademarks may be reproduced in any form or by any means without the prior written permission of Roswell Marine.

ROSWELL U.S.A.

2900 Murrell Rd.
Rockledge, FL 32955 | Tel. (321) 638-1331

ROSWELL CANADA

11208 261st street
Acheson, Alberta T7X 6C7 | Tel. (780) 962-0868

ROSWELL AUSTRALIA

6 Toorak Avenue
Taren Point, NSW 2299 AU | Tel. +61-(2)-9525-1223

EMAIL

info@roswellmarine.com